

DESCRIPTION	SIZE (A x B) (in inches)	COLLAR SIZE (in)	CFM	PART NUM.
D5-23. 62-47. 62-2-02-00-1D-C2-P	23-5/8 X 47-5/8	10	688	855050314
D5-23. 62-23. 62-2-02-00-1D-C2-P	23-5/8 X 23-5/8	10	319	855050335
D5-23. 62-35. 62-2-02-00-1D-C2-P	23-5/8 X 35-5/8	10	504	855050737
D5-23. 00-47. 00-2-02-00-1D-C2-P	23 X 47	10	660	855050957
D5-21. 00-42. 00-2-02-00-1D-C2-P	21 X 42	10	530	SUBMITTAL
D5-21. 00-18. 00-2-02-00-1D-C2-P	21 X 18	10	205	SUBMITTAL
D5-21. 00-27. 00-2-02-00-1D-C2-P	21 X 27	10	327	SUBMITTAL
D5-23. 75-23. 75-2-02-00-1D-C2-P	23-3/4 X 23-3/4	10	319	855059925
D5-23. 62-41. 62-2-02-00-1D-C2-P	23-5/8 X 41-5/8	10	596	855052148
D5-23. 12-35. 12-2-02-00-1D-C2-P	23-1/8 X 35-1/8	10	485	855050977
D5-23. 50-47. 50-2-02-00-1D-C2-P	23-1/2 x 47-1/2	10	683	855059973
D5-23. 50-35. 50-2-02-00-1D-C2-P	23-1/2 x 35-1/2	10	499	855059974
D5-23. 50-23. 50-2-02-00-1D-C2-P	23-1/2 x 23-1/2	10	316	855059975
D5-23. 12-47. 12-2-02-00-1D-C2-P	23-1/8 x 47-1/8	10	665	855050441
D5-23. 62-40. 00-2-02-00-1D-C2-P	23-5/8 x 40	10	571	85505XXXX
D5-21. 50-34. 00-2-02-00-1D-C2-P	21-1/2 X 34	10	433	855053740
D5-22. 75-46. 75-2-02-00-1D-C2-P	22-3/4 X 46-3/4	10	648	855051280
D5-22. 75-22. 75-2-02-00-1D-C2-P	22-3/4 X 22-3/4	10	294	85505XXXX
D5-23. 75-44. 37-2-02-00-1D-C2-P	23-3/4 X 44-3/8	10	642	855054275
D5-23. 62-29. 62-2-02-00-1D-C2-P	23-5/8 X 29-5/8	10	412	855051344
D5-22. 75-22. 75-2-02-00-1D-C2-P	22-3/4 x 22-3/4	10	294	855051368
D5-17. 62-23. 62-2-02-00-1D-C2-P	17-5/8 x 23-5/8	10	233	855058552
D5-15. 62-15. 62-2-02-00-1D-C2-P	15-5/8 x 15-5/8	10	125	855051414

NOTES:

1. FILTER MEDIA: MICRO-GLASS FIBER / ACRYLIC RESIN BINDER
2. FRAME MAT' L: 6063-T5 ANODIZED ALUMINUM
3. SEALANT MAT' L: FIRE RETARDANT/PHOSPHORUS FREE TWO PART POLYURETHANE
4. GRILLE MAT' L: 24 GAGE WHITE POWDER COATED STEEL (62% D. A.) DOWNSTREAM
5. COVER MAT' L: 24 GAGE GALVANIZED

TESTING NOTES:

1. EACH FILTER SHALL BE LEAK TESTED IN ACCORDANCE WITH IEST-RP-CC-034.

FILTER SPECIFICATIONS:

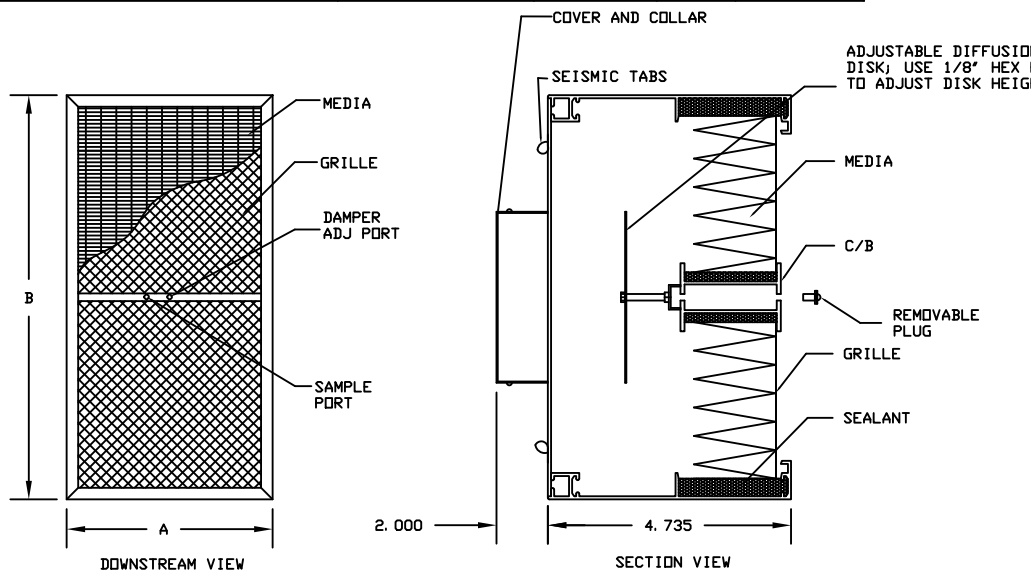
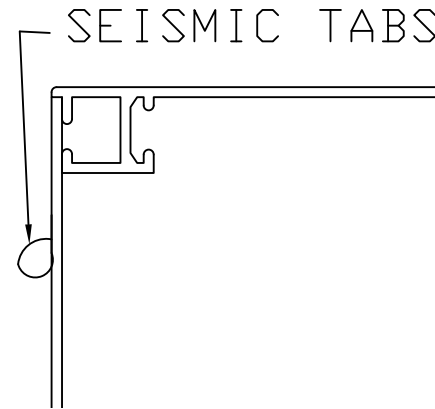
EXTRUSION TYPE: FIL-641
 PLEAT DEPTH (mm): 41
 EFFICIENCY: 99.99% MIN vs. 0.3 @ 100 FPM USABLE FACE VELOCITY
 RESISTANCE: 0.47" W.G. INITIAL AVG. @ 100 FPM USABLE FACE VELOCITY

UL RATING:

1. FILTERS MEET UL-900

FRAME TOLERANCES:

LENGTHS: +0.000 / -0.063"
 DIAGONALS: WITHIN 1/4" TOTAL ALLOWANCE FOR DIAGONALS ≥ 30in.
 WITHIN 1/8" TOTAL ALLOWANCE FOR DIAGONALS < 30in.



CUSTOMER APPROVAL BLOCK			
YOUR APPROVAL OF THIS PRINT AUTHORIZES CAMFIL USA INC. TO PROCEED WITH MATERIAL PROCUREMENT, TOOLING AND PRODUCT FABRICATION. ANY CHANGES MADE AFTER APPROVAL MAY INCUR FURTHER EXPENSES TO THE CUSTOMER			
<input type="checkbox"/> OK AS IS		<input type="checkbox"/> SEND REVISED DWG.	
SIGNATURE/DATE _____			
COMPANY NAME _____			



©Camfil USA Inc. <http://www.camfil.com>

DESCRIPTION
SLIMLINE DIFFUSER
41MM HEPA

APPROVED BY:	DATE:	DRAWN BY:	DATE:	SHEET	DRAWING NUMBER	REV.
TG	2/18/13	JC	2/18/13	1 of 1	500742	A